



Step 1: Check the rudder hinge alignment by temporarily attaching the Lower Hinge Assembly to the V-Stab Assembly. Temporarily attach the Rudder Spar Assembly to the V-Stab Assembly as shown in Figure 1.

When installing the hinge hardware, use one washer between the bolt head and R-1205 Hinge Bracket, one washer between nut and hinge bracket, and only one washer between each hinge bracket and upper hinge assembly. Begin with the same hardware order for the Lower Hinge Assembly. AN960-10L Washers may be substituted for AN960-10 Washers to adjust clearance between hinge brackets.

Once a fit is confirmed, make note of the washers used. Detach the Rudder Spar Assembly.

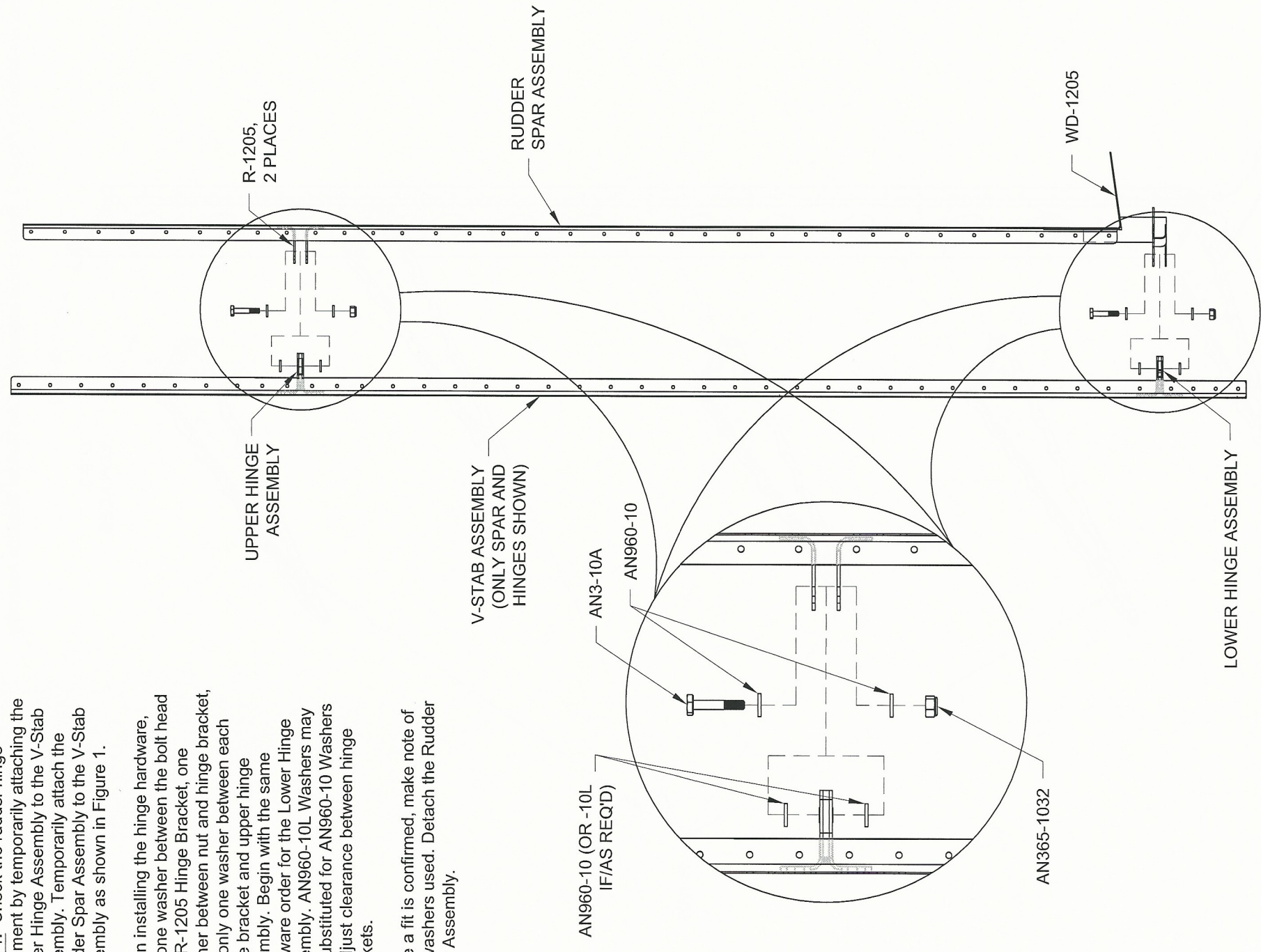


FIGURE 1:  
CHECK HINGE SPACING

Step 2: Remove the R-1205 Hinge Brackets and WD-1205 Rudder Horn. Rivet the R-1204 Spar Caps and the R-1203 Main Rib to the R-1202 Spar. Rivet only the four holes common to the main rib. See the rivet call-out in Figure 2.

Step 3: Rivet the R-1205 Hinge Brackets to the R-1204 Spar Caps and R-1202 Spar. Rivet the remaining holes in the spar caps to the spar. See the rivet call-outs in Figure 2.

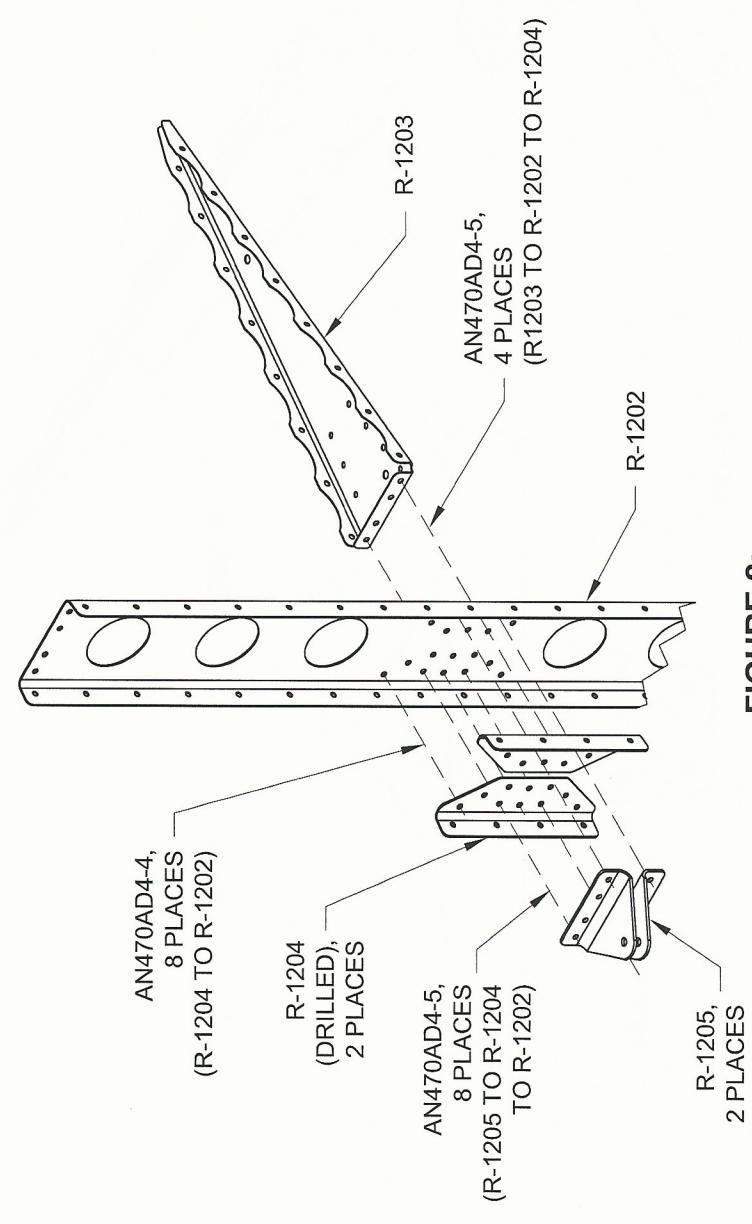


FIGURE 2:  
UPPER HINGE BRACKET ATTACHMENT

Step 4: Remove the forward flange from one R-1203 Main Rib, per dimension in Figure 3. Deburr the trimmed edge. Hereafter refer to this trimmed rib as the R-1203A Trimmed Rib.

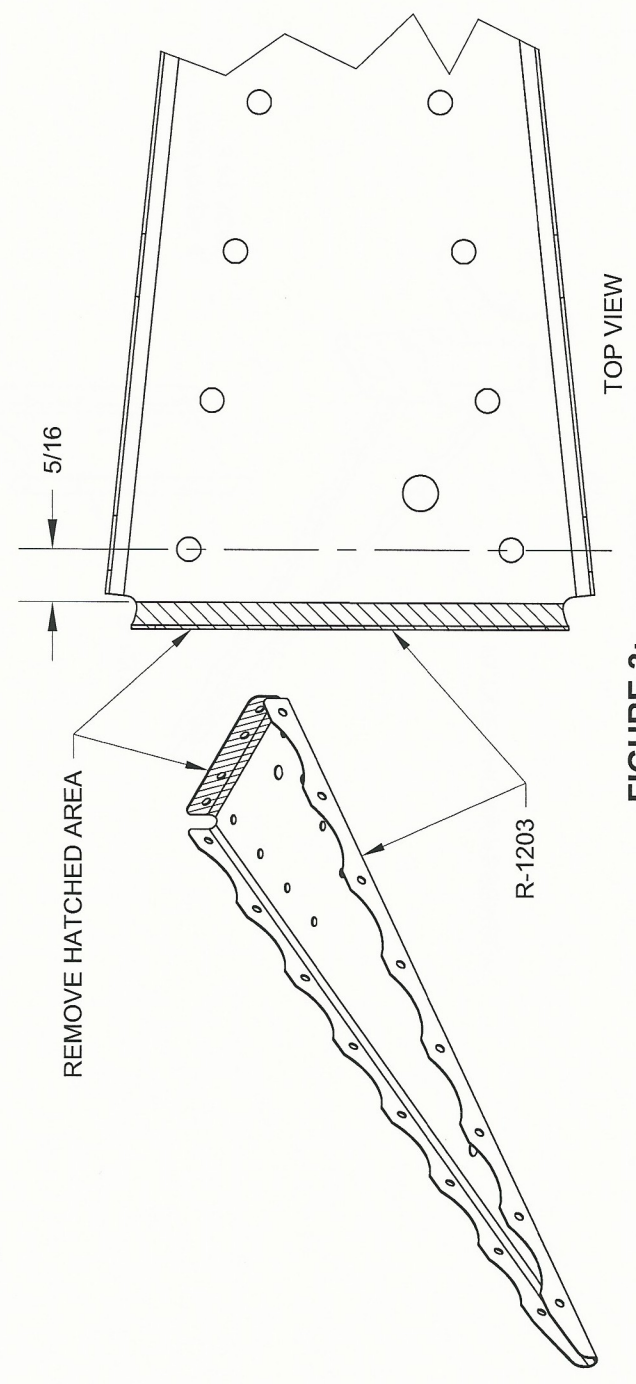


FIGURE 3:  
REMOVE MAIN RIB FLANGE