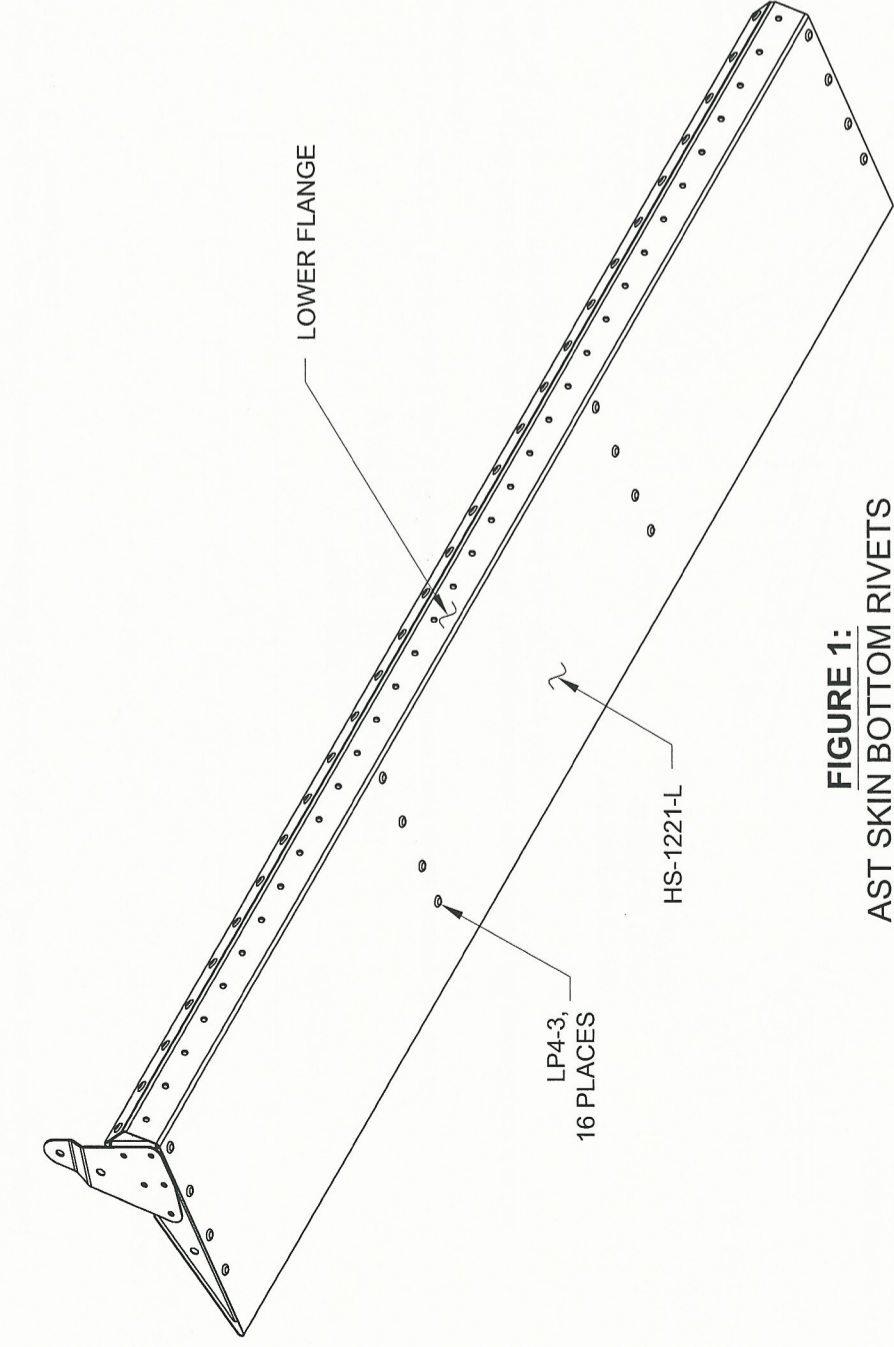




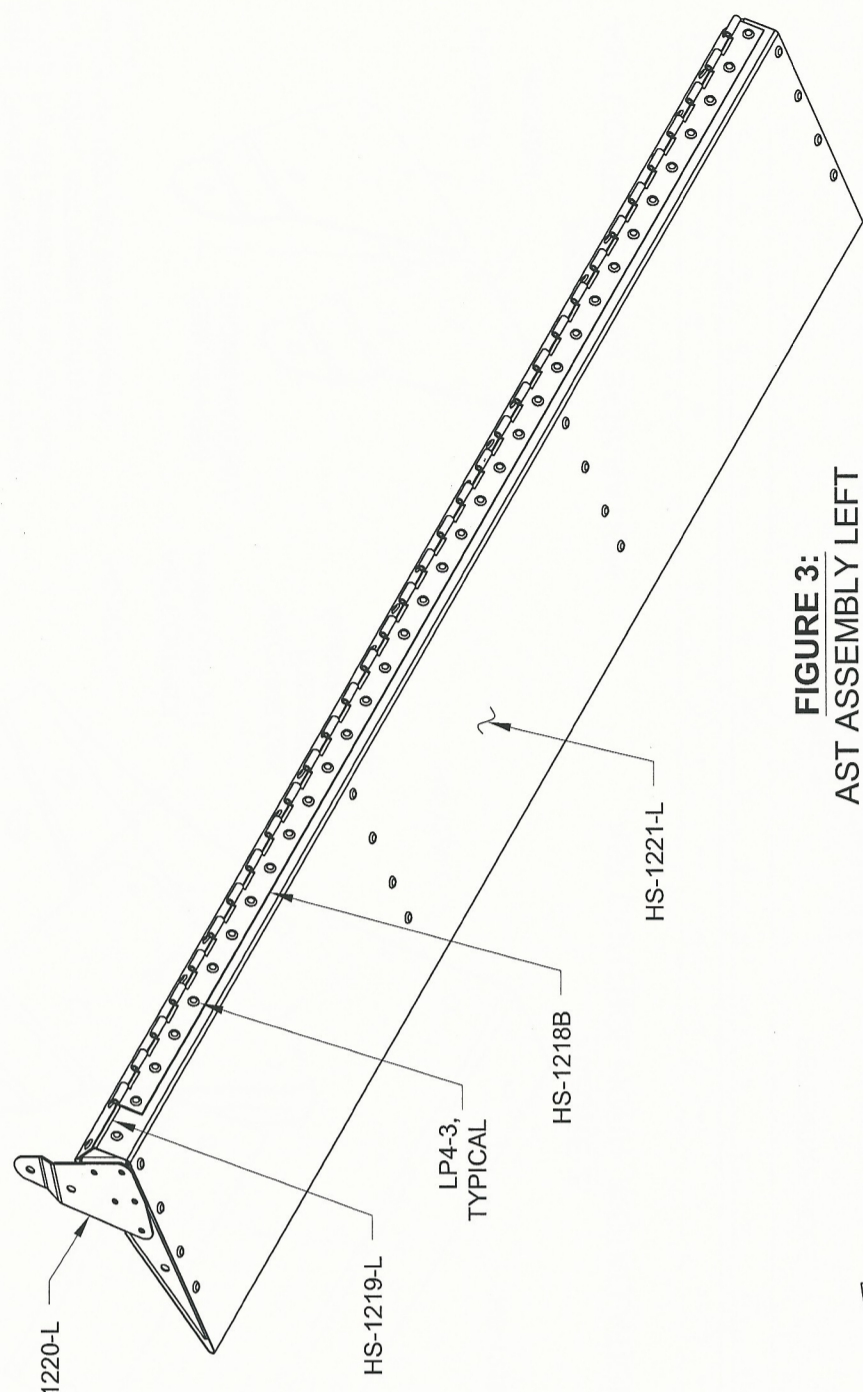
Step 2: Install the AST Hinge with eyelets outward, as shown in Figure 2. Rivet the HS-1218B AST Hinge to the HS-1221-L AST Skin and the HS-1219-L AST Spar per call-outs in Figure 3. Begin at the hole farthest from the HS-1220-L AST Horn.

Hereafter refer to this as the AST Assembly Left and the opposite assembly as the AST Assembly Right.

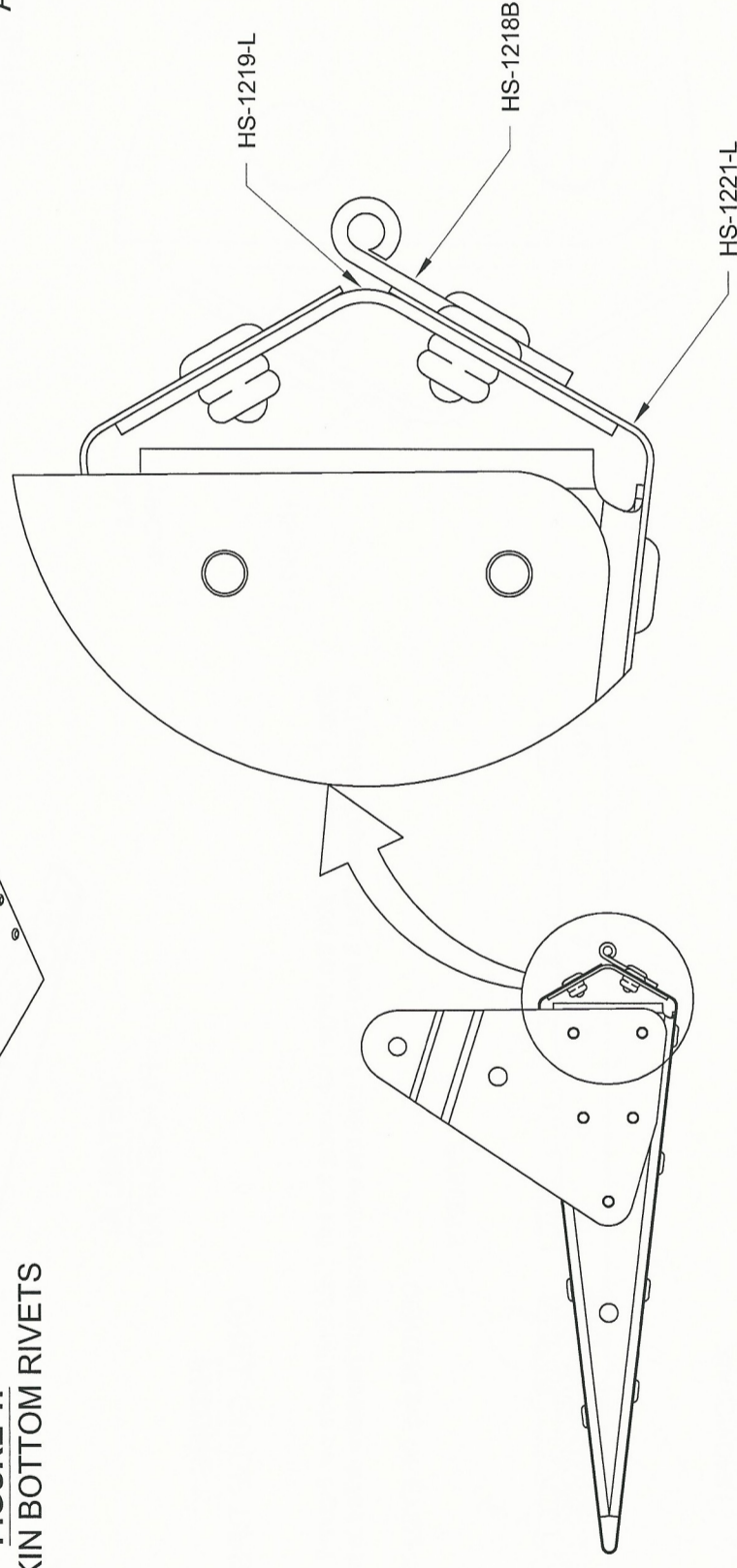
Step 1: Rivet the bottom surface of the HS-1221-L AST Skin to the HS-1222 AST Ribs per call-out in Figure 1. Guide the lower flange of the AST skin to the outside surface of the HS-1219-L Spar as shown in Figure 2.



**FIGURE 1:**  
AST SKIN BOTTOM RIVETS



**FIGURE 3:**  
AST ASSEMBLY LEFT



**FIGURE 2:**  
AST SIDE VIEW