



Step 6: Follow the 'Installing the Static Air System' instructions to install the left and right side static sources into the F-1280-L & -R Left and Right Side Skins in the locations called out in Figure 2.

Step 7: Install the end of the 1/8 ID Clear Plastic Tube over the right static source. Route the 1/8 ID Clear Plastic Tube along the inside flange of the F-1208 Frame. Follow the inside flange of the F-1208 Frame to the left side. Secure the tube with plastic tie wraps through the holes along the flange. Install the loose end of the 1/8 ID Clear Plastic Tube to the plastic tee. Position the plastic tee at the same height as the J-stiffener located directly above the static source. Install the end of a separate piece of 1/8 ID Clear Plastic Tube to the left static source and the other end of that tube to the plastic tee.

Step 8: Install a 1/4 inch long piece of 1/8 ID Clear Plastic Tube to the remaining leg of the plastic tee. Connect one end of the PT 1/4 OD Polypropylene tube to that same leg of the plastic tee. Route the polypropylene tube down the inboard flange of the frame, then to the J-stiffener of the F-1281-L Lower Left Skin as shown in Figure 2. Route the tube inside the J-stiffener 'hook' of the lower skin with the WH-P30, shown in Detail A-A, to the forward edge of the existing structure. Coil the remainder of the tube and secure the coil to the inside of the lower left skin with tape or string.

Step 1: Turn the assembly over so the frames are pointing up. Support the assembly with two sawhorses, one at the F-1208 Frame and one at the F-1210 Frame.

Step 2: Cleco the F-1211 Assembly to the aft end of the existing structure as shown in Figure 1.

Step 3: Hook the J-stiffener of the F-1280-L & -R Left and Right Side Skins into the notches of the F-1208, F-1209, F-1210 Frames. Cleco the left and right side skins to the existing structure as shown in Figure 1.

Step 4: Route a string from the forward end of the existing structure, through the center of each frame, to the F-1211 Assembly. The string will go out through one of the stabilator control cable cutouts and back in through the other stabilator control cable cutout as shown in Figure 1. Return the end of the string to the forward end of the existing structure. Tape both ends of the string to the inside surface of the bottom skin.

NOTE: For the remaining steps on this page, leave the plastic tie wraps loose on the F-1208 Frame and the J-stiffener forward of the F-1208 Frame for additions later.

Step 5: Route the WH-P30 Trim Wires. Start six inches aft of the F-1211 Assembly, route the trim wires through the snap bushing. Route the trim wires inside the J-stiffener 'hook' of the F-1281-L Lower Left Skin to the forward edge of the existing structure. At the holes provided in the J-stiffener aft of the F-1208 Fuse Frame secure the trim wires using plastic tie wraps. Coil the remainder of the trim wires and secure the coil to the inside of the lower left skin with tape.

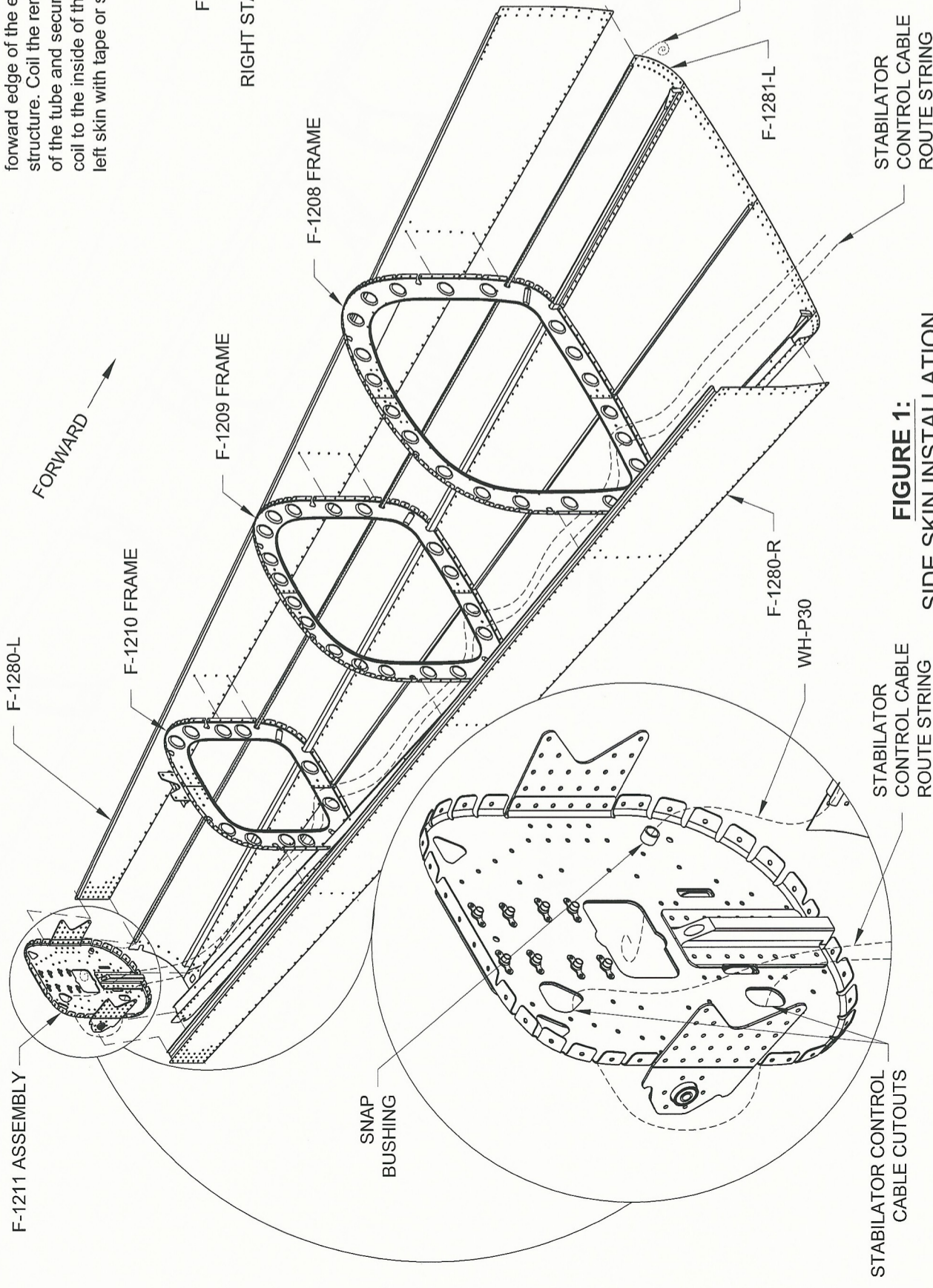


FIGURE 1:
SIDE SKIN INSTALLATION

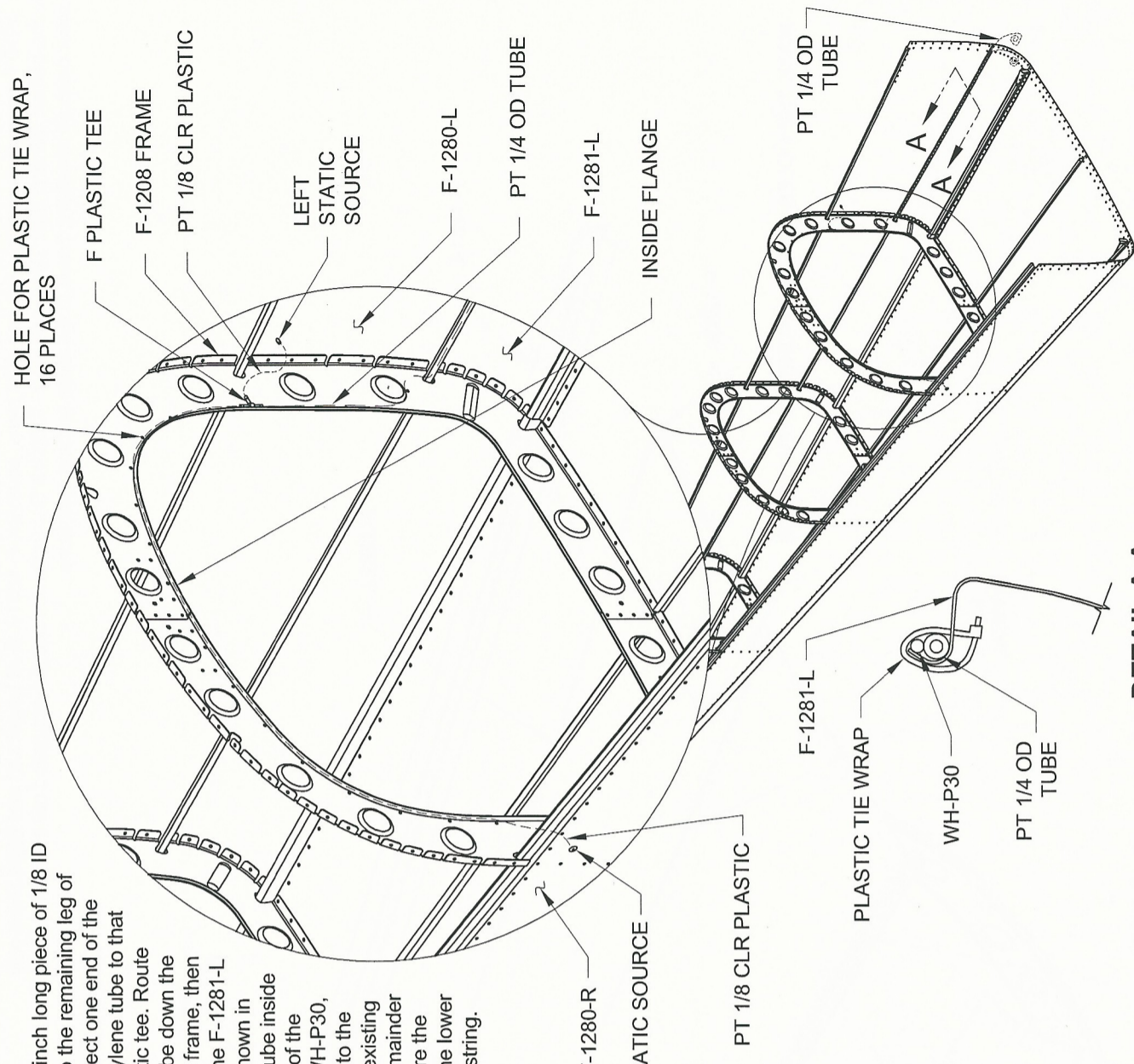


FIGURE 2:
STATIC SYSTEM SOURCES