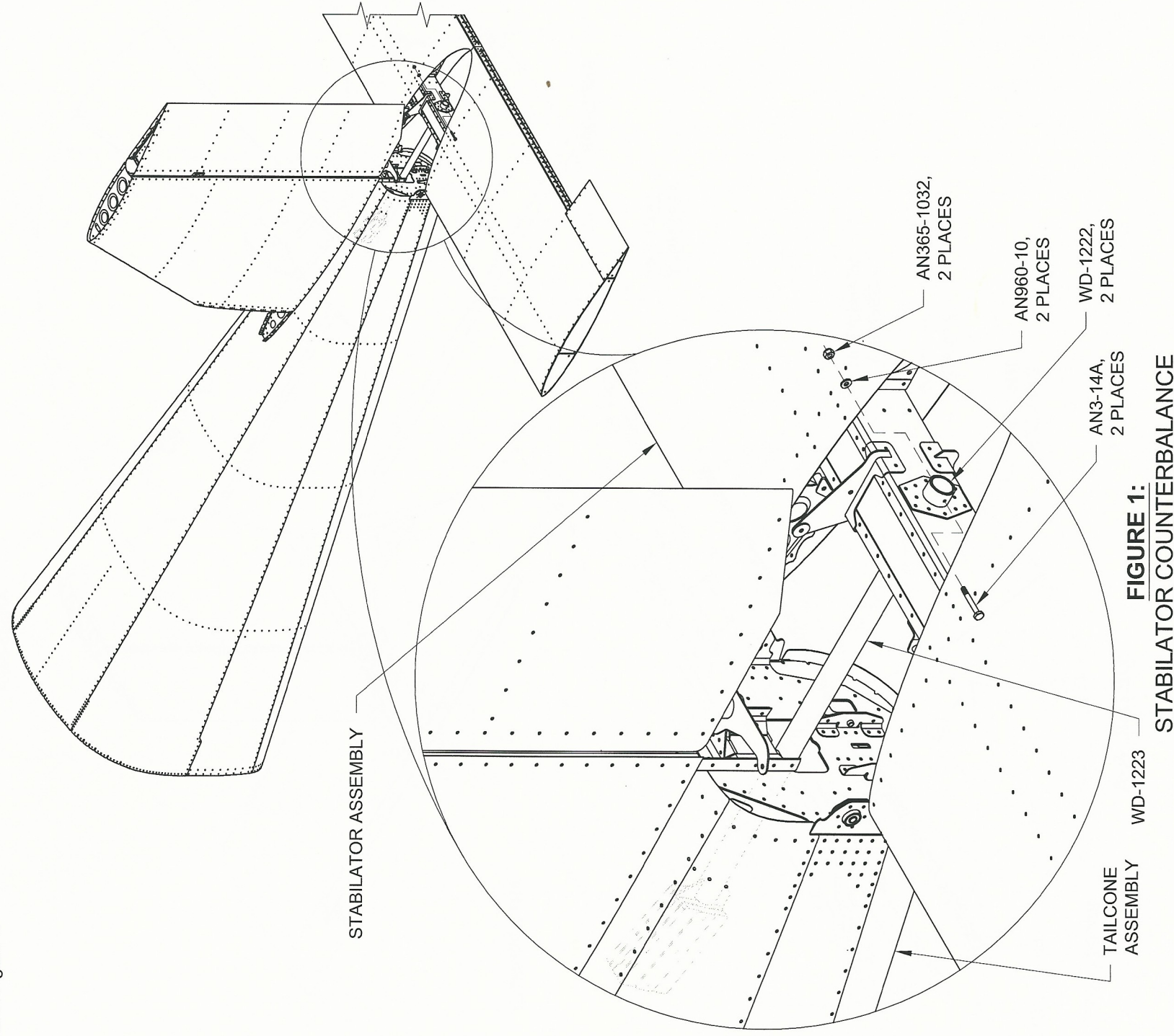




**Step 1:** Remove the AN4 bolt, used to locate the glued washers, from each of the stabilator hinge brackets, refer to Figure 2. Mark "top" on the WD-1223 Counterbalance Arm near the spar. Temporarily remove the counterbalance arm hardware used to install the counterbalance arm to the Stabilator Assembly as shown in Figure 1.

**Step 2:** Rotate the WD-1223 Counterbalance Arm 90°; keep the counterbalance arm within both WD-1222 Counterbalance Brackets. Insert the lead weights into the hole in the aft bulkhead of the Tailcone Assembly. Turn the counterbalance arm back to the original position as indicated by "top" from the previous step. Re-install the counterbalance arm hardware called out in Figure 1.

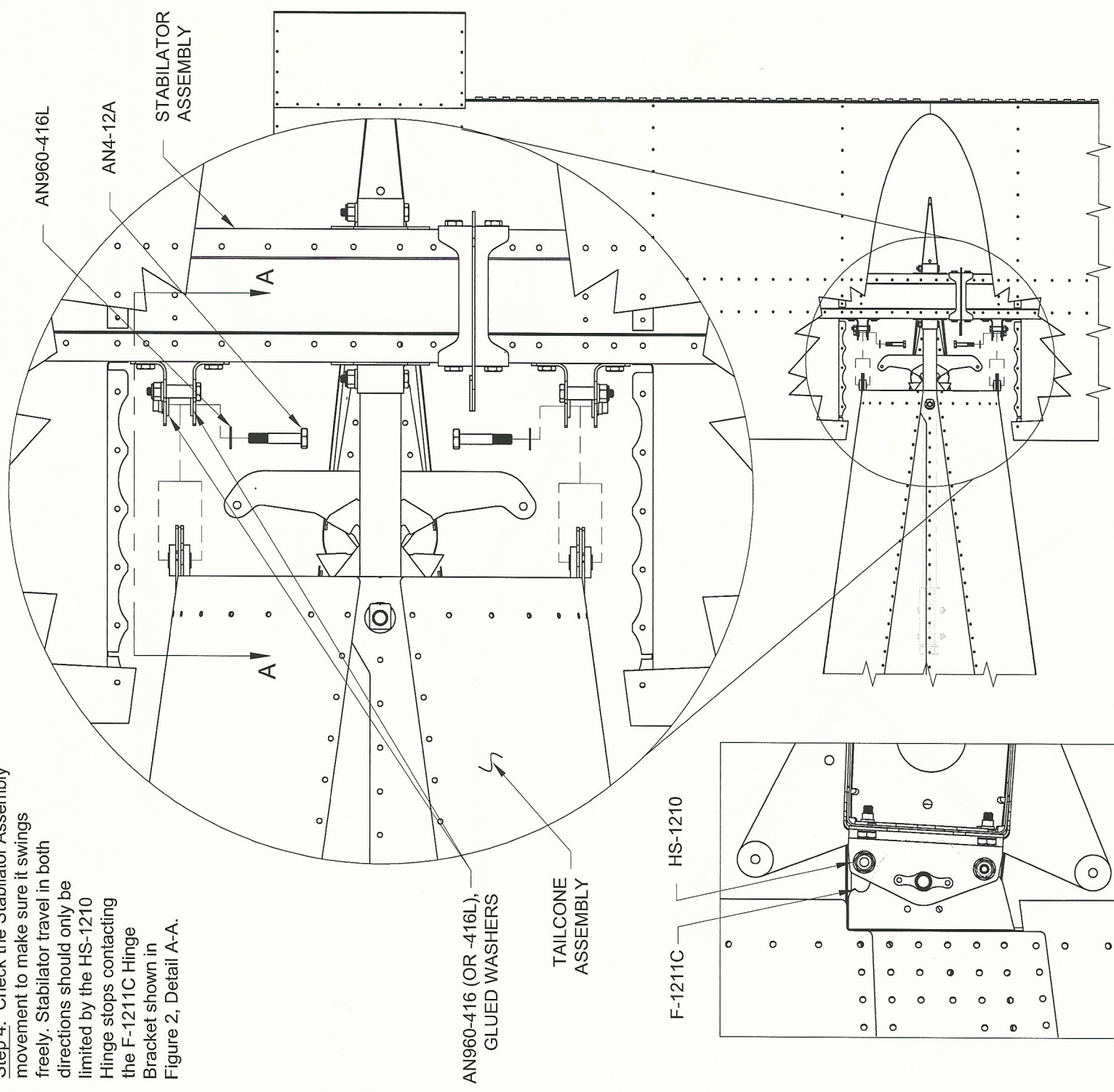


**FIGURE 1:**  
STABILATOR COUNTERBALANCE

**Step 3:** Install the Stabilator Assembly to the Tailcone Assembly using hardware called out in Figure 2.

Refer to Page 10-05 for previous information about the glued washers.

**Step 4:** Check the Stabilator Assembly movement to make sure it swings freely. Stabilator travel in both directions should only be limited by the HS-1210 Hinge stops contacting the F-1211C Hinge Bracket shown in Figure 2, Detail A-A.



**FIGURE 2:**  
STABILATOR ATTACH  
BOTTOM VIEW