

CAUTION: Install castle nuts in this section finger tight, to eliminate lateral play but allow freedom of movement, then install the cotter pin.

Step 1: Attach the F-1287D-L & -R Clevis Plates together using the parts and hardware called out in Figure 1. Pay attention to the orientation of the clevis plates in relation to the F-1287C Link. Cleco the clevis plates to the F-1287E Pushrod. Pay attention to the orientation of the pushrod in relation to the clevis plates.

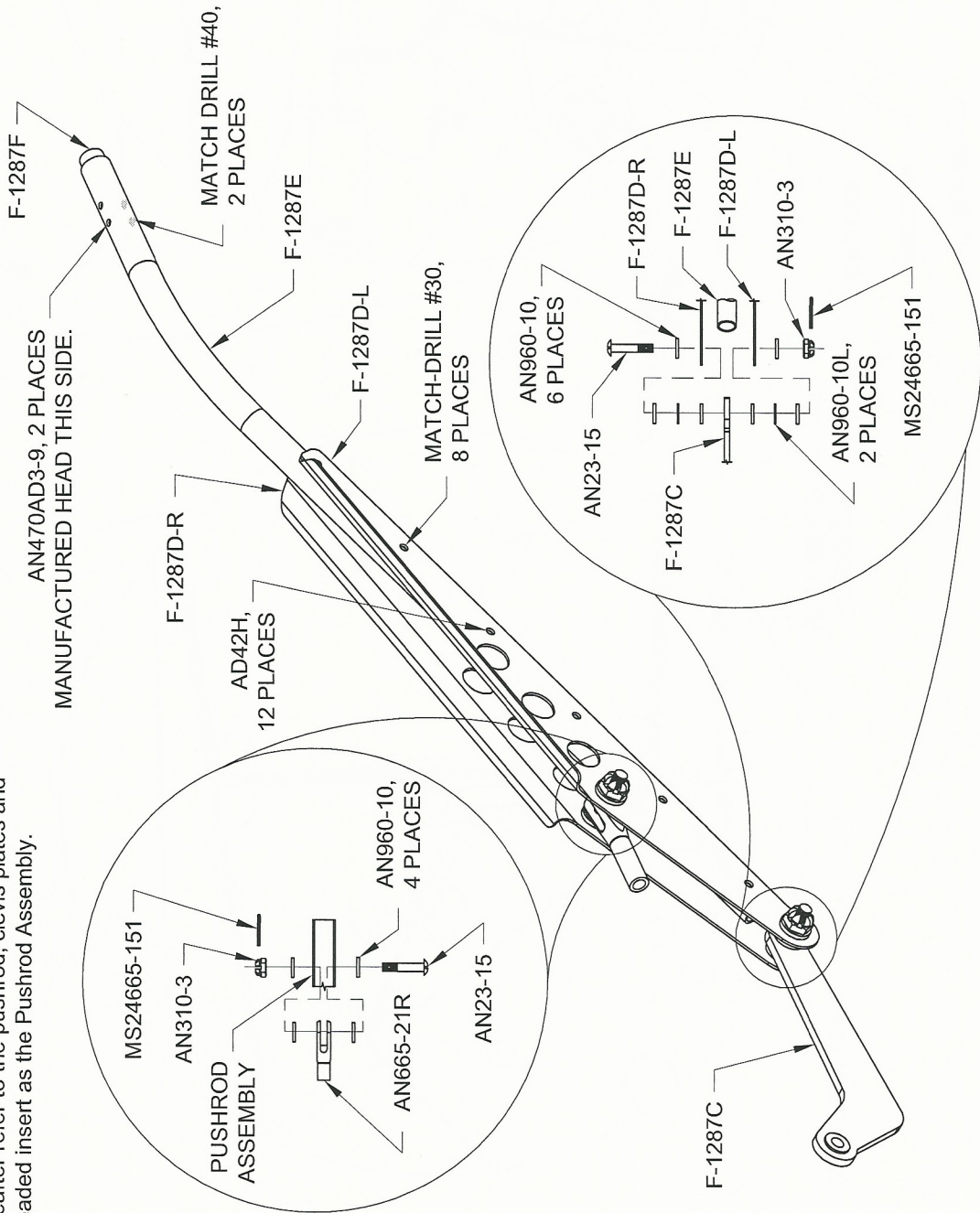
Step 2: Match-Drill the holes in each of the F-1287D-L & -R Clevis Plates into the F-1287E Pushrod as called out in Figure 1. Remove the clevis plates **with** the hardware still attached. Clear away chips.

Step 3: Clamp the F-1287F Threaded Insert into the curved end of the F-1287E Pushrod as shown in Figure 1. Use a rivet or similar to align the holes in the threaded insert with the holes in the pushrod.

Step 4: Match-Drill the holes from the F-1287E Pushrod and the F-1287F Threaded Insert into the pushrod as called out in Figure 1.

Step 5: Rivet the F-1287D-L & -R Clevis Plates to the F-1287E Pushrod using hardware called out in Figure 1. Apply pressure toward the clevis plate while setting each rivet. Rivet the F-1287F Threaded Insert to the pushrod using rivets called out in Figure 1.

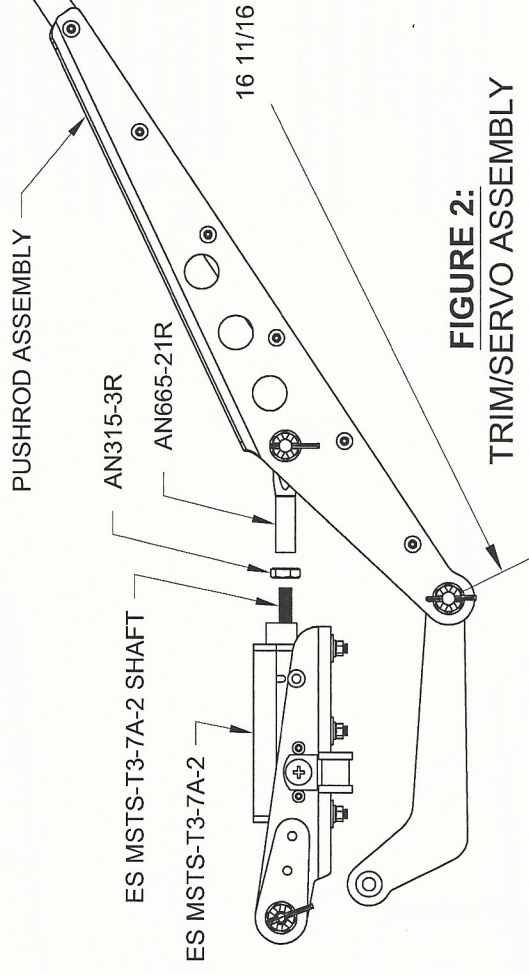
Hereafter refer to the pushrod, clevis plates and threaded insert as the Pushrod Assembly.



**FIGURE 1:
PUSHROD ASSEMBLY**

Step 6: Install the called out rod end bearing and jam nut into the F-1287F Threaded Insert per dimensions in Figure 2. Achieve the dimension given then rotate the bearing body to align with the centerline of the Pushrod Assembly as shown in Figure 2.

Step 7: Thread the jam nut onto the ES MSTs-T3-7A-2 Pitch Trim Servo shaft until it contacts the pitch trim servo housing. Thread the clevis rod end of the Pushrod Assembly onto the pitch trim servo shaft until it contacts the jam nut. Back the clevis rod end off one full turn. Tighten the jam nut against the clevis rod end.



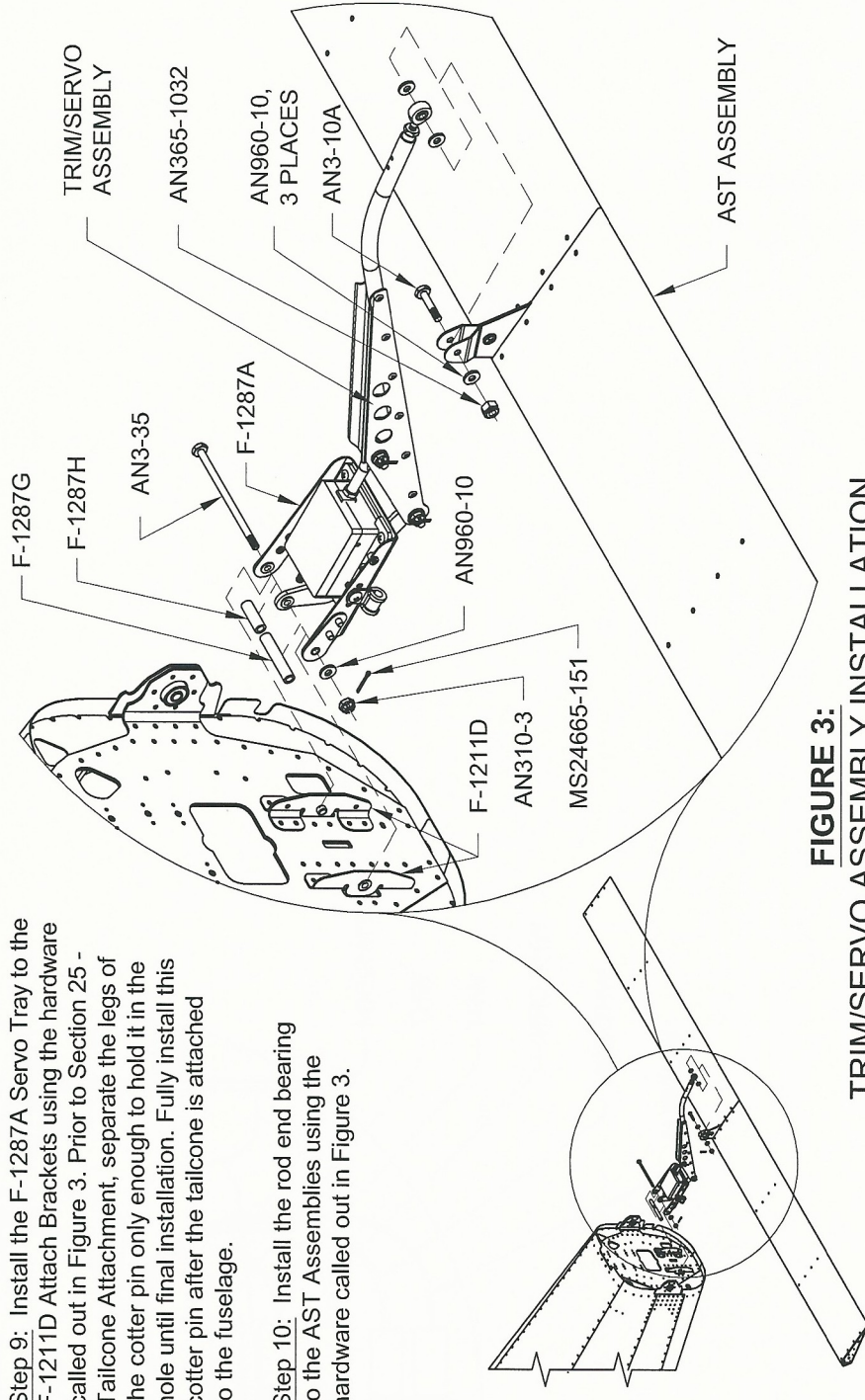
**FIGURE 2:
TRIM/SERVO ASSEMBLY**

NOTE: For clarity, the Rudder, V-Stab, and Stabilator Assemblies are not shown in Figure 4.

Step 8: From below the Stabilator Assembly, guide the rod end bearing of the Trim/Servo Assembly up between the stabilator main skins to the AST Assembly control horns as shown in Figure 3.

Step 9: Install the F-1287A Servo Tray to the F-1211D Attach Brackets using the hardware called out in Figure 3. Prior to Section 25 - Tailcone Attachment, separate the legs of the cotter pin only enough to hold it in the hole until final installation. Fully install this cotter pin after the tailcone is attached to the fuselage.

Step 10: Install the rod end bearing to the AST Assemblies using the hardware called out in Figure 3.



**FIGURE 3:
TRIM/SERVO ASSEMBLY INSTALLATION**