

FIGURE 1: SETTING THE RUDDER PEDAL RIGGING STOP

Step 1: Set the Rudder Pedal Rigging Stop between the F-1290 Pedal Blocks and the F-1202F Bulkhead as shown in Figure 1.

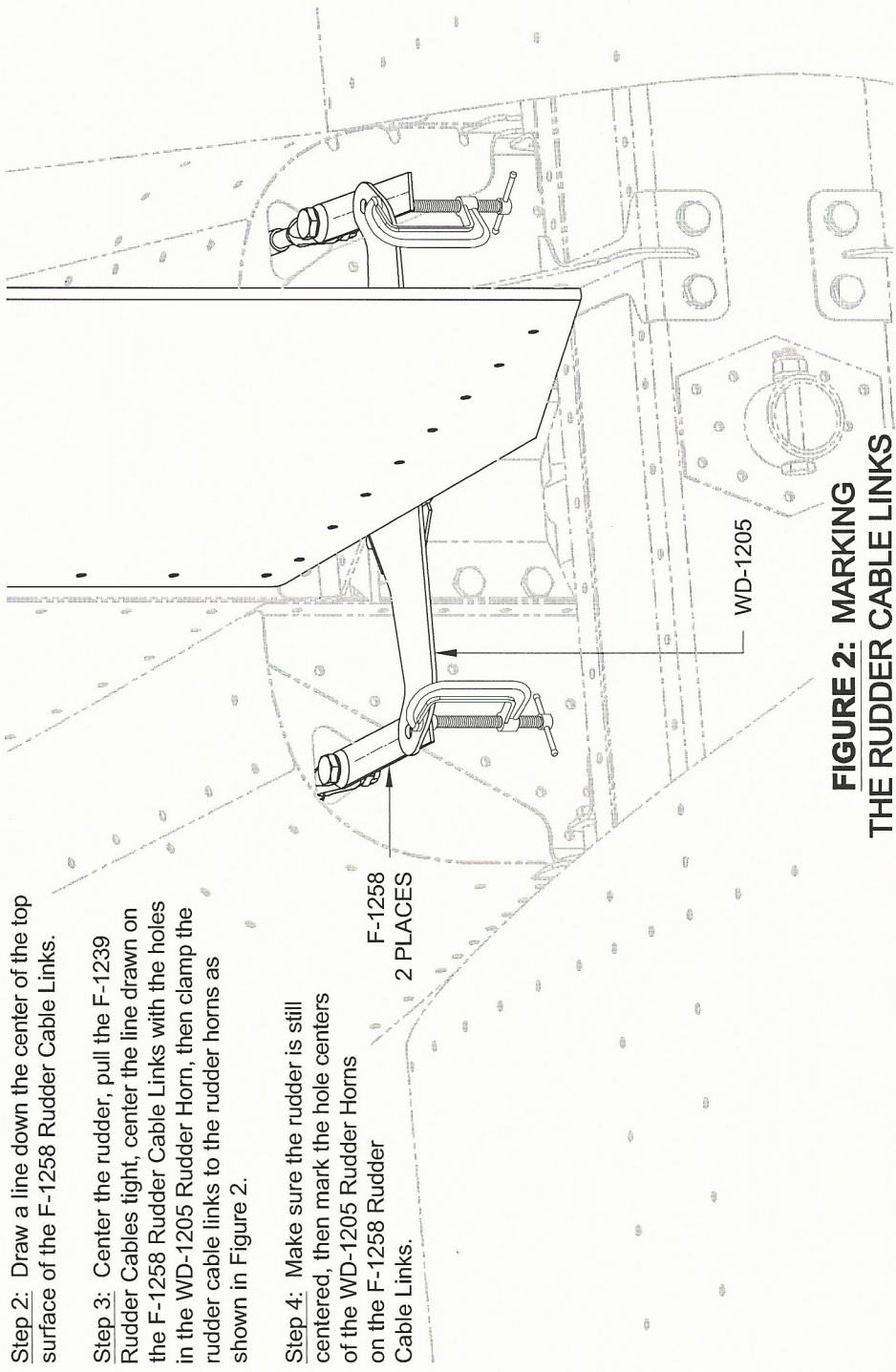


FIGURE 2: MARKING THE RUDDER CABLE LINKS

Step 2: Draw a line down the center of the top surface of the F-1258 Rudder Cable Links.

Step 3: Center the rudder, pull the F-1239 Rudder Cables tight, center the line drawn on the F-1258 Rudder Cable Links with the holes in the WD-1205 Rudder Horn, then clamp the rudder cable links to the rudder horns as shown in Figure 2.

Step 4: Make sure the rudder is still centered, then mark the hole centers of the WD-1205 Rudder Horns on the F-1258 Rudder Cable Links.

Step 5: Remove the Rudder Pedal Rigging Stops.

Step 6: Remove the marked F-1258 Rudder Cable Links from the F-1239 Rudder Cables, then secure the rudder cables to the WD-1205 Rudder Horn using the hardware called out in Figure 3.

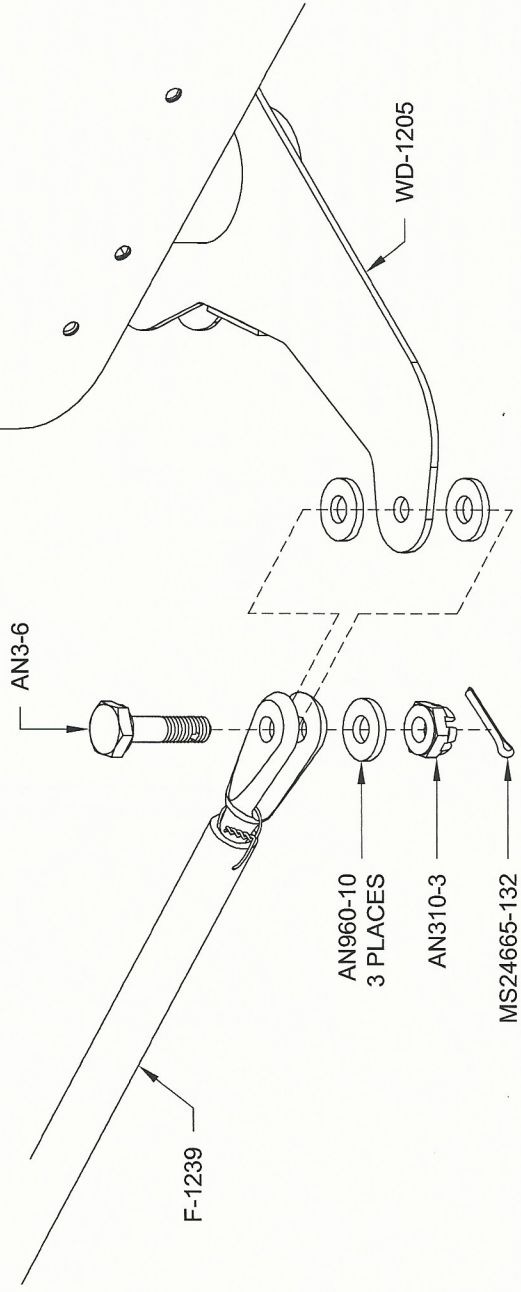


FIGURE 3: SECURING THE RUDDER CABLES TO THE RUDDER HORN

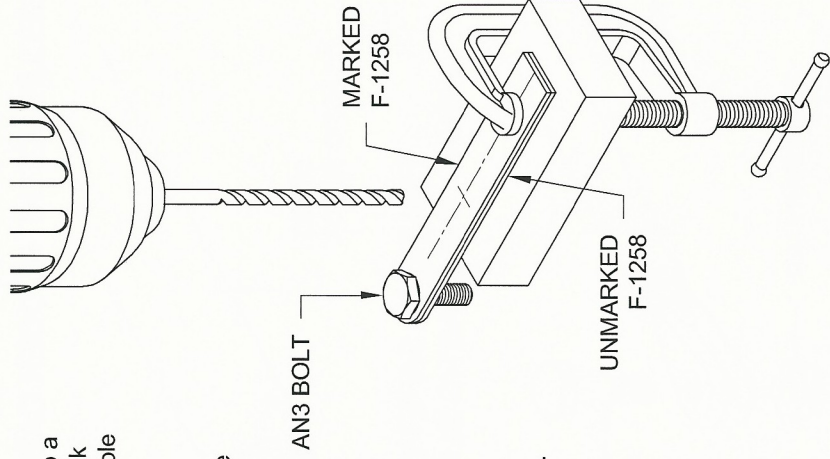


FIGURE 4: DRILLING THE RUDDER CABLE LINKS

Step 7: With a bolt through the ends as shown in Figure 4, clamp a marked F-1258 Rudder Cable Link on top of an unmarked rudder cable link.

Step 8: Drill #30 through both F-1258 Rudder Cable Links at the marks, then final-drill #12.

Step 9: Repeat the last two steps with the remaining marked and unmarked F-1258 Rudder Cable Links.

Step 10: Trim the F-1258 Rudder Cable Links as shown in Figure 5. The rudder cable links with the holes closer together are the F-1258-R, those with the holes farther apart are the F-1258-L.

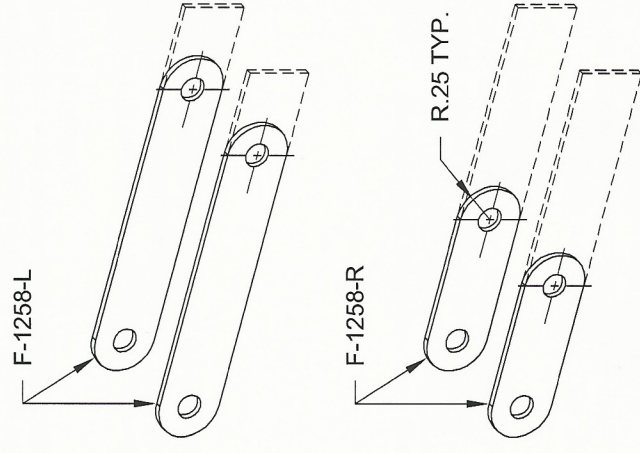


FIGURE 5: TRIMMING THE RUDDER CABLE LINKS