



CAUTION: The tank sealant must be fully cured before leak testing the Fuel Tank Assembly. Use less than 1 psi. DO NOT over pressurize the Fuel Tank Assembly.

Step 1: Temporarily attach the T-1211 Fuel Neck to the Fuel Tank Assembly using the T-1212 Collar and hose clamps. Install the T-406A Fuel Cap. Attach the air valve (from the FUEL TANK TEST KIT) to the AN832-4D bulkhead fitting using the hose clamps and hose called out in Figure 1. Securely attach a balloon (or equivalent) to the VA-261 Fuel Strainer.

Step 2: Follow the instructions provided with the Fuel Tank Test Kit to test the Fuel Tank Assembly for leaks. Repair any leaks, then re-test the Fuel Tank Assembly until no leaks are detected.

Step 3: Remove the Filler Neck Assembly, the balloon, the hose, the hose clamps and the air valve.

CAUTION: The T-406A Fuel Cap washer casting is threaded onto the center bolt.

NOTE: The T-406A Fuel Cap vent holes do not need to align to each other.

Step 4: Disassemble the T-406A Fuel Cap. Drill #40 a vent hole through the fuel cap-cap casting, centered on the last step closest to the stainless washer. Drill #40 a vent hole through the fuel cap-washer casting, within the concave area and outside of the nut area, as shown in Figure 2. Deburr the drilled vent holes and clear away chips. Reassemble the fuel cap. Refer to the instructions provided with the fuel cap for proper adjustment.

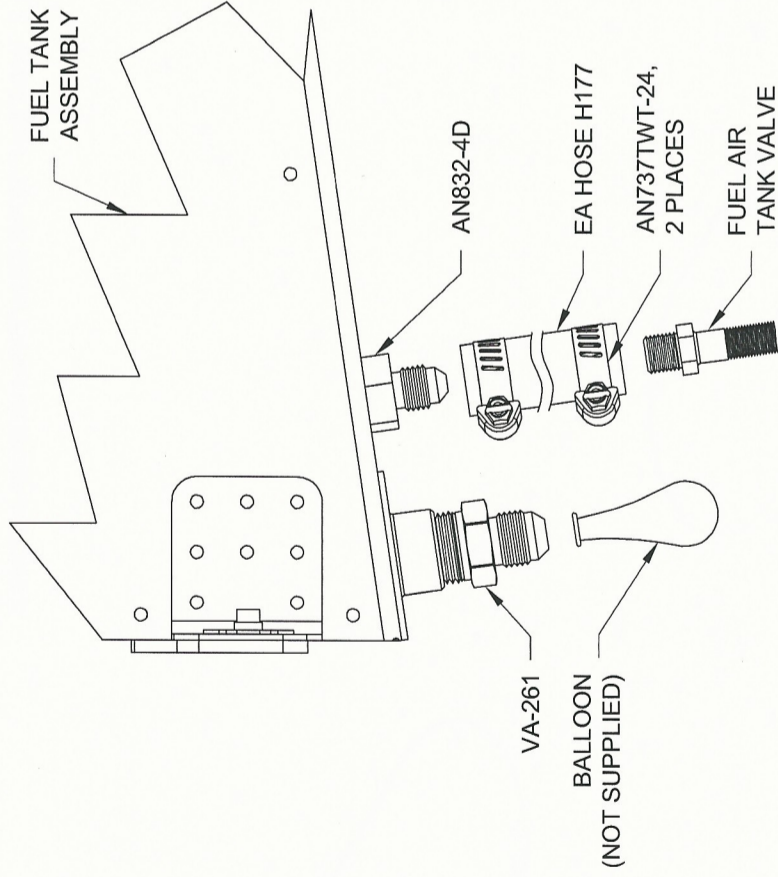


FIGURE 1: LEAK TEST

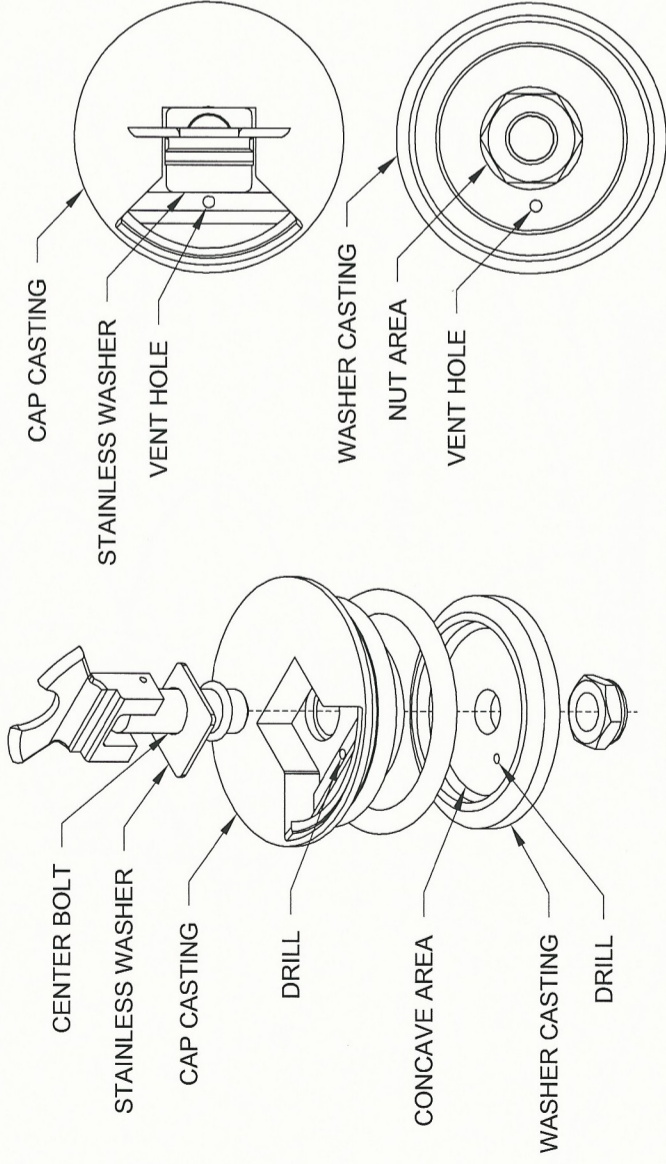


FIGURE 2: FUEL CAP VENT HOLE

Step 5: Reinstall the Fuel Tank Assembly using hardware called out on Page 37-06, Figure 1. Connect the fuel line and fuel return line at this time. Slide the T-1212 Fuel Neck Collar onto the T-1211 Fuel Neck Flange. Apply a sparing amount of release agent (oil, Boelube, or similar) on the inside surface of the F-1277-R Fwd Turtle Deck Skin where the fuel neck flange will attach. Smear fuel tank sealant on the face of the fuel neck flange that will abut the fwd turtle deck skin. Fasten the fuel neck to the fwd turtle deck skin using hardware called out in Figure 3. Avoid distorting the fwd turtle deck skin by tightening fasteners only enough to cause sealant to bulge evenly from underneath the perimeter of the fuel neck flange. Slide the fuel neck collar down and clamp it to the fuel neck flange and T-1204B Flange.

Step 6: Remove excess cured sealant from inside the T-1211 Fuel Neck Flange. Stuff a rag into the fuel neck flange. Trim away cured sealant from the perimeter of the fuel opening in the F-1277-R Fwd Turtle Deck Skin. Then remove rag and trimmed sealant.

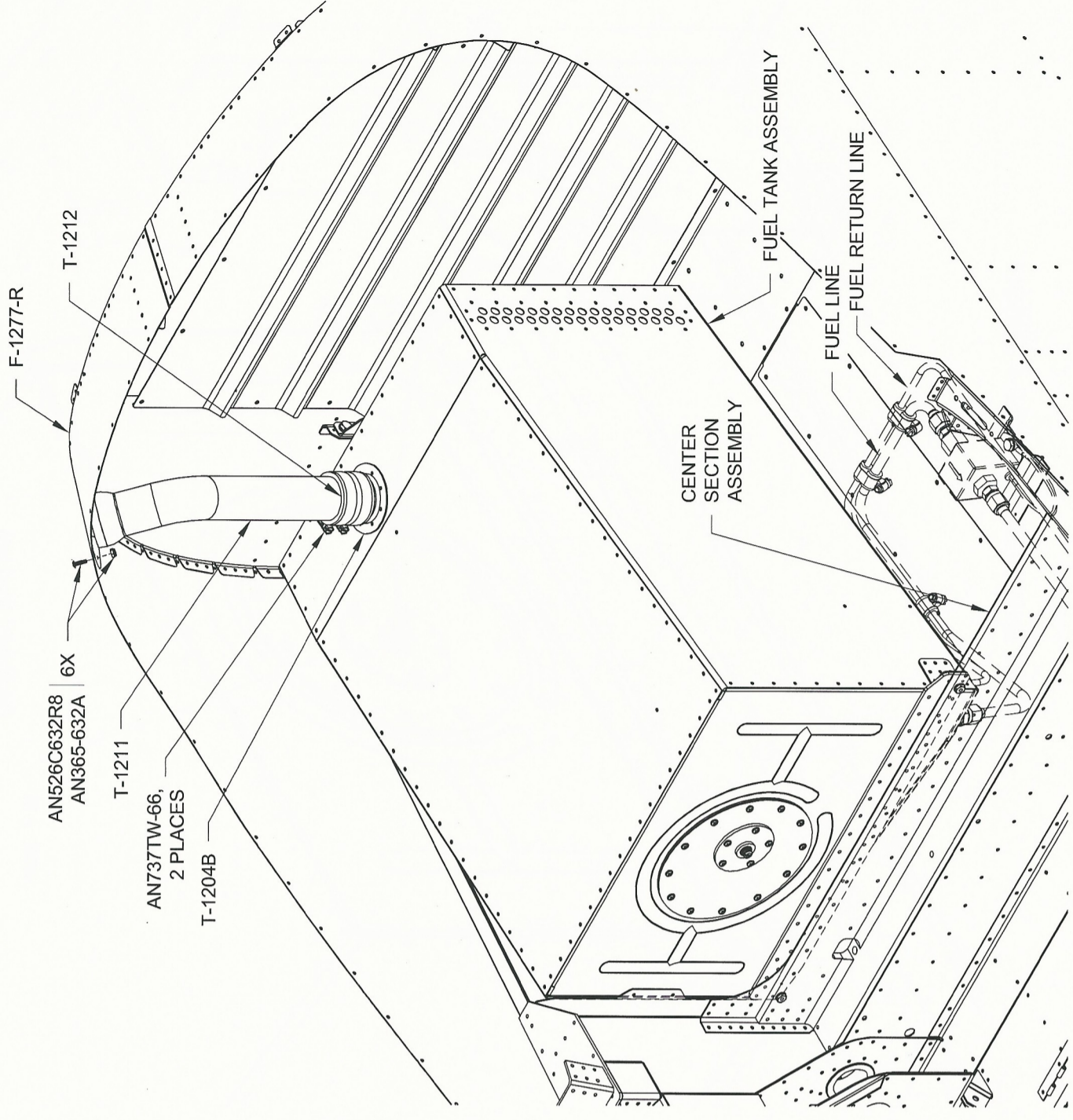


FIGURE 3: INSTALLING THE FUEL TANK